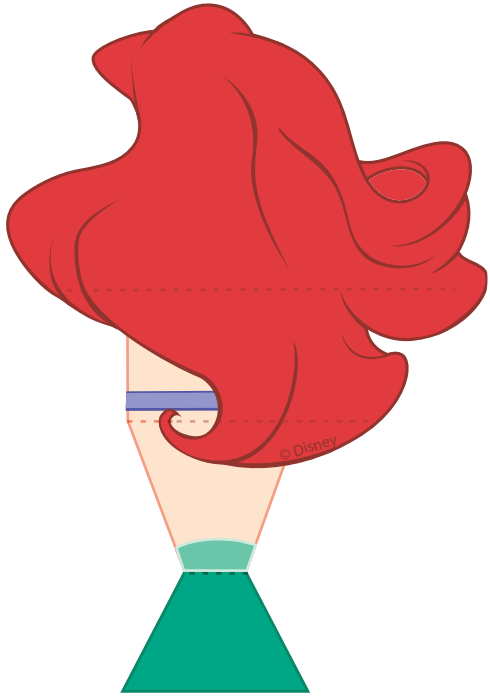
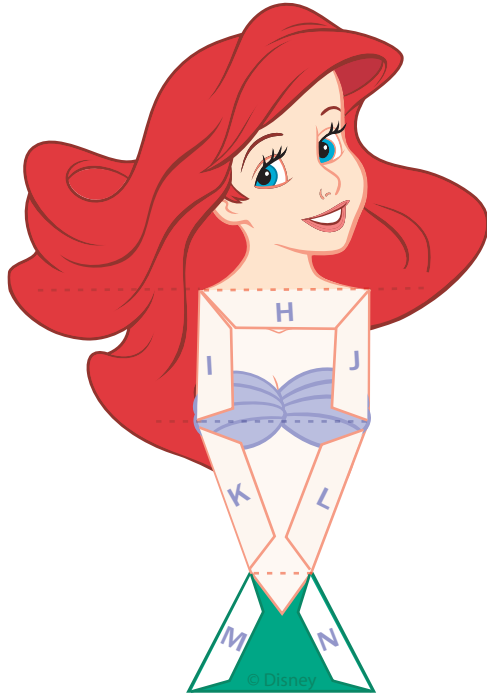


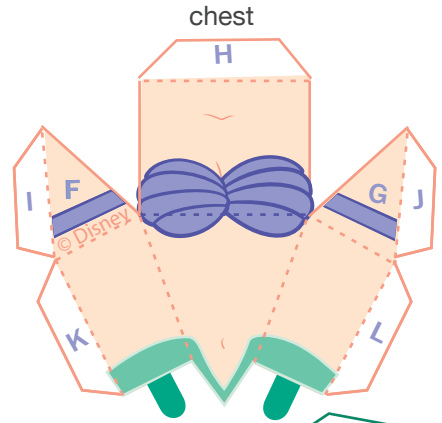
Ariel Papercraft



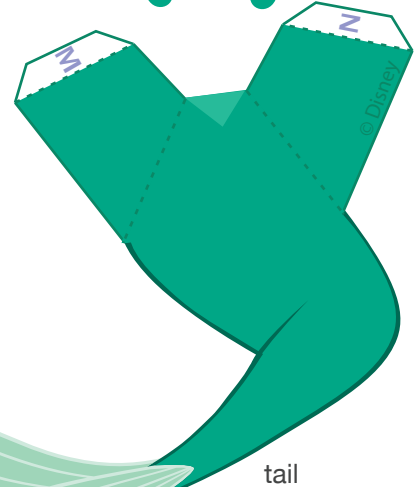
back



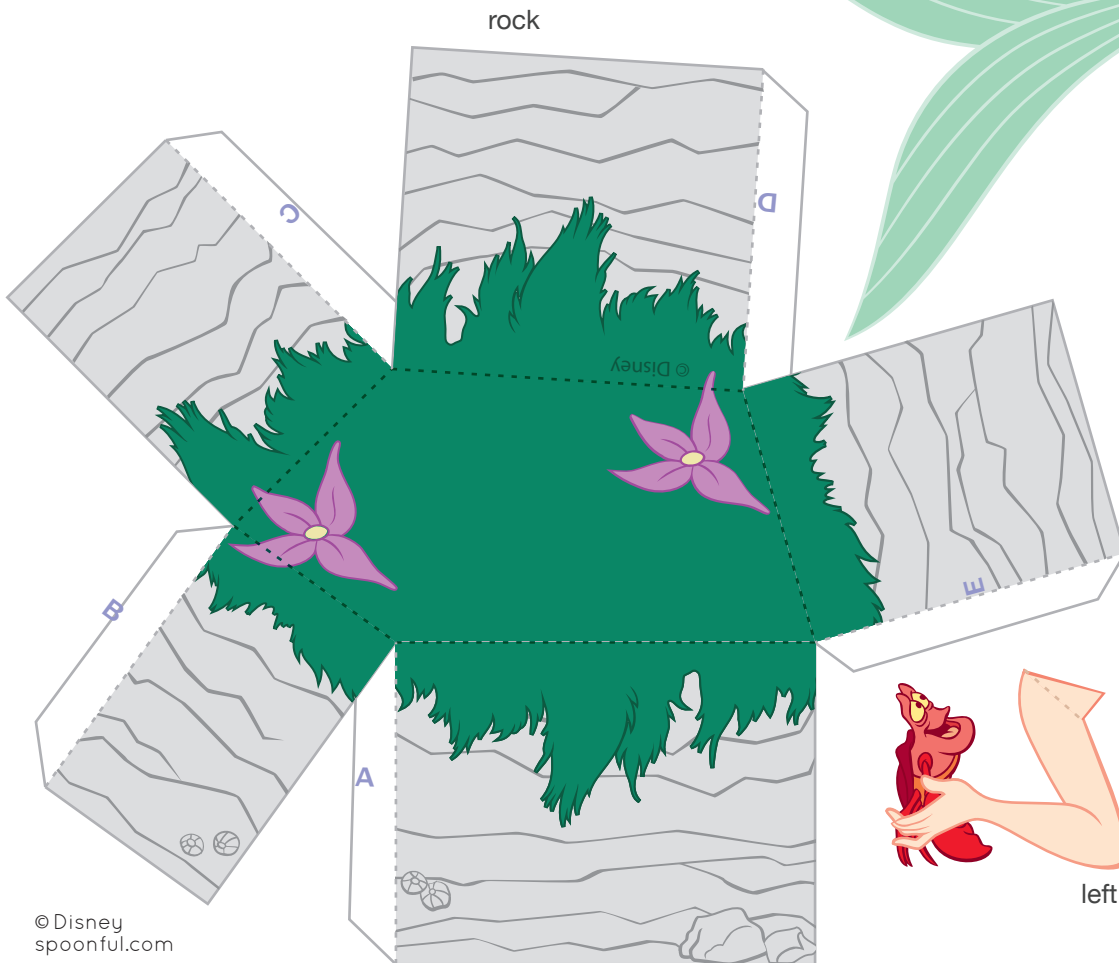
torso



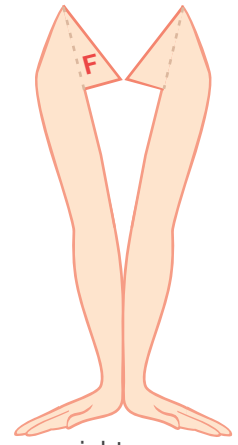
chest



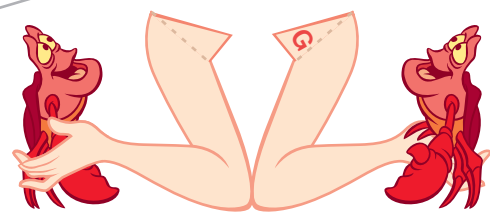
tail



rock



right arm



left arm

Ariel Papercraft

1. Print out your princess on regular paper or cardstock. Cut out each piece with a craft knife. Do not cut along the dashed lines -- this is where you will fold the paper.
2. Line up the back of Ariel's head with her face and glue them together so that the design is now two-sided. After the glue has dried, fold the bottom part of Ariel's torso (where her tail begins) away from you along the dashed line. Then, fold the middle of her torso towards you along the dashed line. And then, fold her head away from along the dashed line across her shoulders.
3. Take Ariel's chest piece and fold along each dashed line. Make each fold away from you. When you are finished folding, place a dab of glue on the H tab and press it into place on the H area on Ariel's torso. Make sure her shoulders line up correctly.
4. After the glue dries, add glue to the I, J, K, and L tabs and press them into place. Hold the pieces together until the glue dries. You may need to use a pen or pencil inside her chest area to position the tabs just right.
5. Make all of the folds on Ariel's tail away from you. Attach her tail to the bottom of her torso by gluing tabs M and N into place and by gluing the two green tabs hanging from her torso onto the outside of her tail.
6. Fold each of Ariel's arms and glue them so that the design is two sided. Make sure they are lined up before the glue dries.
7. After the glue on her arms dries, attach them to each side of her body by gluing the F tab to the F area and G tab to the G area.
8. Make all of the folds on Ariel's rock away from you. Glue each of the tabs to the inside of the rock so that it forms a little stand for her.